

Public Document Pack



Democratic Services
White Cliffs Business Park
Dover
Kent CT16 3PJ

Telephone: (01304) 821199
Fax: (01304) 872452
DX: 6312
Minicom: (01304) 820115
Website: www.dover.gov.uk
e-mail: democraticservices@dover.gov.uk

2 November 2016

Dear Councillor

I am now able to enclose, for consideration at the meeting of the **DOVER LEISURE CENTRE PROJECT ADVISORY GROUP** on Thursday 3 November 2016 at 5.00 pm, the following slides that were unavailable when the agenda was printed.

6 **PROGRAMME** (Page 2)

To receive a verbal briefing on the revised project programme.

8 **RISKS** (Page 3)

To receive a verbal briefing on the main risks and steps being taken to mitigate them.

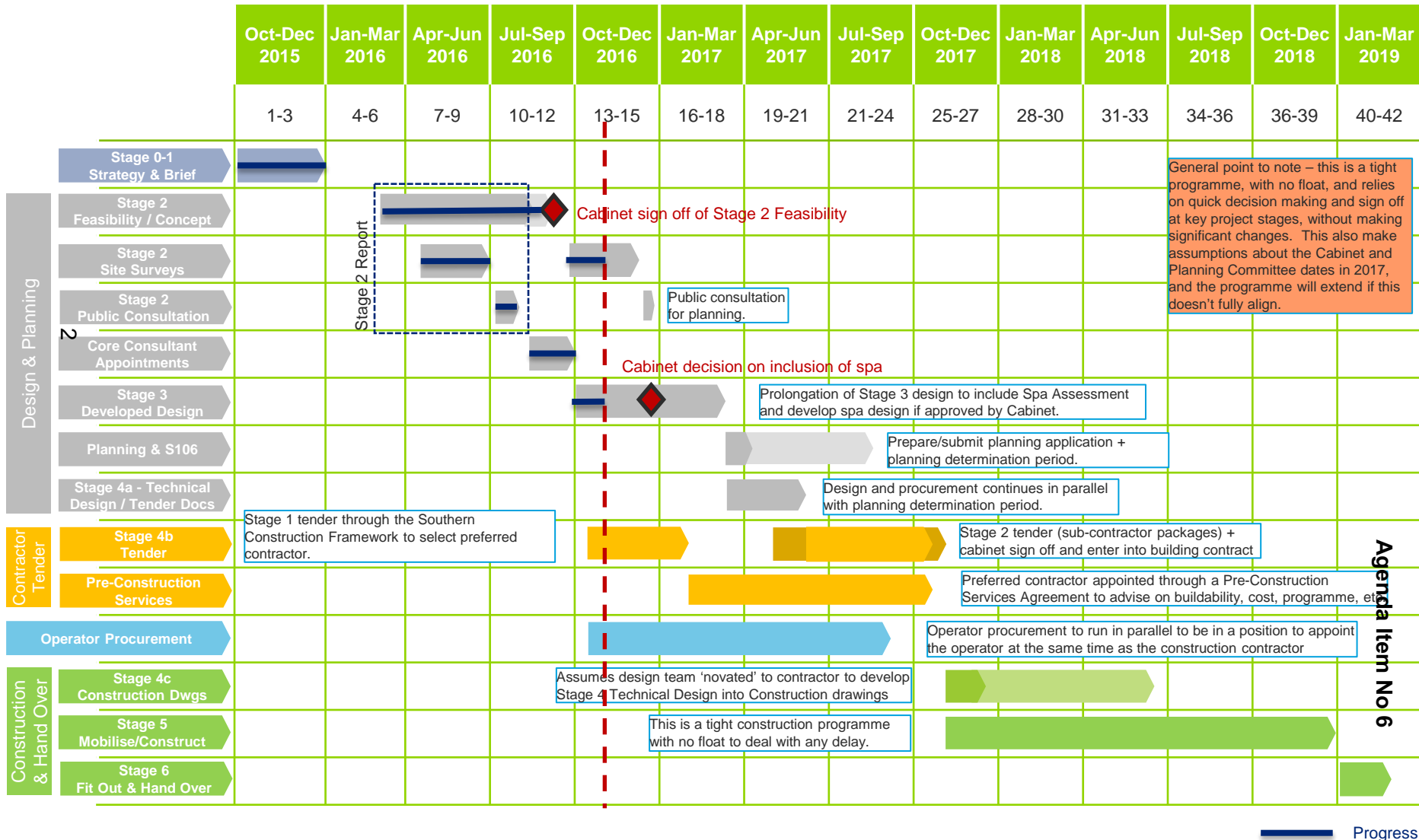
Yours sincerely

A handwritten signature in black ink, appearing to read "Nicky", written over a white background.

Chief Executive

Dover Leisure Centre

Summary Programme – Revision G



Dover Leisure Centre

Top Project Risks

Risk ID Code	Risk Area	Risk Description	Assessment of Risk				Trend	Last Review
			Impact (1 - 5)	Likelihood (1 - 5)	Score			
P11	Planning	S106 Agreement/Developer Contribution required for offsite highway improvements or contribution to Bus Rapid Transit	5	5	25	↑	20	
PROG05	Programme	Construction programme is insufficient.	5	5	25	↑	20	
SO01	Site Ownership	Delay / unable to purchase the site / cost more than anticipated making the project unaffordable.	5	5	25	→	25	
U01	Utilities	Insufficient water supply capacity to serve the proposed development. Increased cost and programme delay. Payment required for offsite works.	5	5	25	→	25	
D04	Design	Building location changed.	4	5	20	↑	15	
F01	Finance/Funding	Sport England funding not obtained.	5	4	20	→	20	
P03	Planning	Planning application is rejected or consent is delayed. (See also other planning risks, which could have an impact on this, and the proposed mitigation measures)	5	4	20	→	20	
S1	Site	Poor ground conditions.	5	4	20	→	20	
U03	Utilities	Insufficient electrical supply and/or nothing local to the site.	5	4	20	→	20	